



**RAM-X**

## **OPERATION INSTRUCTIONS**

For your safety, it is important that you completely read the instructions and warnings.

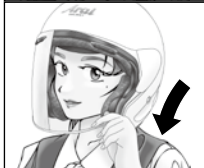






## CONTENTS

To open/close shield .....	3
To operate browvents .....	3
To operate shade .....	3
To operate top vents .....	5
To remove/replace shield .....	5
To remove/replace shade .....	7
To remove/replace shield holding arms .....	7
To remove/replace earcups .....	8
To remove/replace chinstrap covers .....	10
To remove/replace comfort lining .....	12



## TO OPEN/CLOSE SHIELD

Pull outward on lower left side of shield to release latch system and then raise the shield. To close the shield, push down the shield until the shield is fully latched.

### WARNING:

If your shield becomes too scratched or uncleanable, replace it with a new one. Impaired visibility causes accidents. Use a solution of mild soap or detergent and lukewarm water to clean your shield. Rinse well with clean water, and wipe off with a soft cloth. Never use petrol, thinner, benzene or any other solvents. There are many "aggressive" cleaners on the market, including some supposed to be specifically for use on shield. Arai strongly recommends that you do not use any such products to clean your shield as some of their ingredients may have damaging effects on the shield and other plastic parts installed on your helmet. Do not apply stickers or adhesive tape to the shield, as this will weaken the hard coating. If tinted, the shield is for daylight use only.

## TO OPERATE BROWVENTS

The Browvents are operated from fully closed through intermediate, to fully open positions by simply pulling the vent control up to open, pushing down to close.

## TO OPERATE SHADE

To raise shade, lift at the center of the shade with your thumb.

### WARNING:

When fully raised, the shade is held in place with a detent to resist it from falling from wind pressure, vibration and normal head movement. However, some reasonably foreseeable force can cause the shield to drop unexpectedly.



To lower shade, first, unlock the shade by pulling both ends forward, and push the shade down.

**WARNING:**

Before lowering the shade, be sure to unlock the shade. The shade can only be lowered when the lock system is released.

There is a stop midway in the travel to allow for use to help reduce the glare of lights that cannot be shaded when the shade is in the fully up position (i.e. morning or evening sun).

**WARNING:**

The shade is not fully locked when it is in the midway position. Therefore, it may drop or may be raised unexpectedly from wind pressure, vibration or even normal head movement. Be aware of this and ride carefully.

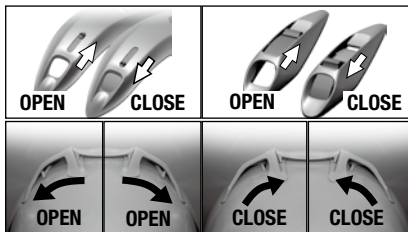
**WARNING:**

Raise the shade of the Pro Shade System for riding at night, through a tunnel, or any conditions that might cause poor visibility.

Do not use sunglasses with the shade of the Pro Shade System in the lower position, as this will dangerously darken your view.

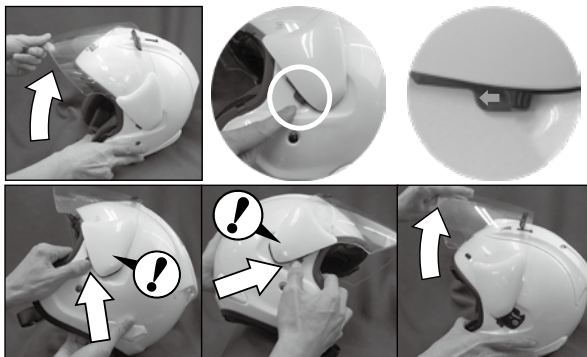
Use only warm water and a micro-fiber cloth to clean the shield and shade. Never use petrol, thinner, benzene or any other solvents.

Scratched or damaged shades/shields of the Pro Shade System should be replaced with new ones.



## TO OPERATE TOP VENTS

Simply push the switches/levers on each vent to open/close the vents.



## TO REMOVE/REPLACE SHIELD

It is recommended to do one side at a time until you become familiar with the removal/installation process.

To remove, place shield in the fully open position. Once fully open, black levers appear from under the shield pivot/holder arms. Slide the levers forward in the direction of the arrow until the pivot/holder releases from the base. Once released, lift the pivot/holder off the base.

### NOTE:

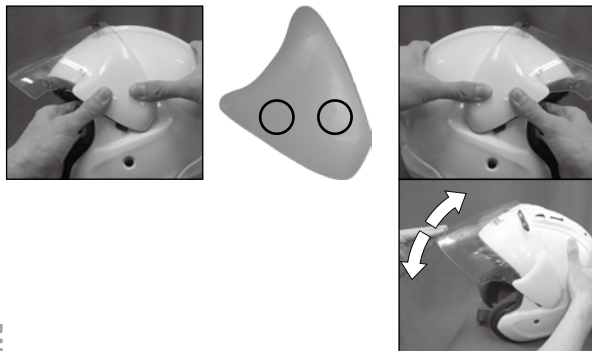
The shield cannot be removed from any other position as the locking system will be engaged.



To install, with the shield in its fully open position as it was when removed, position the pivot/holder over base plate with the bottom and rear edges of the holder lined up with the base plate edges as shown.

**NOTE:**

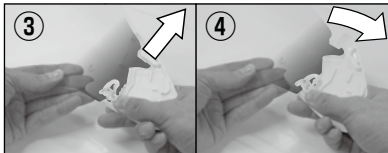
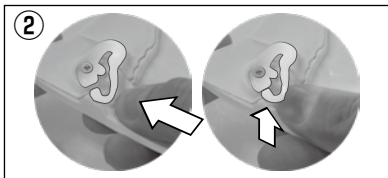
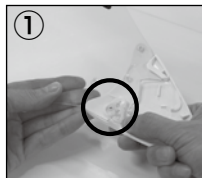
The shield can only be installed from the fully open position.



With the holder in place, push down firmly on the holders in the area indicated by the circles, until you hear and feel them click into position.

Lower the shield to test for proper operation. If the shield does operate properly, remove and re-install again.





## TO REMOVE/REPLACE SHADE

To remove shade for cleaning or replacement, first lower the shade.

Push the release lever on the pivot cover down against the shield ① and slide the pivot cover up to remove it ②. Repeat for the other side, and remove the shade ③.

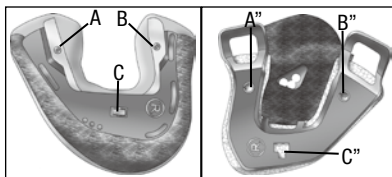
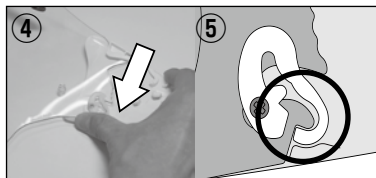
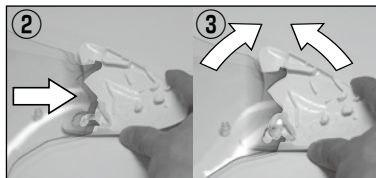
To replace shade, place it on the pivot in the lower position ①. Put the pivot cover into 3 bosses ②, and slide it down until it is locked in place ③. Repeat for the other side.

## TO REMOVE/REPLACE SHIELD HOLDING ARMS

To remove holding arms, remove shield as per the previous instructions.

Hold the shield/holder as illustrated ①. Lift the curled end of the lower bracket out of the pocket as illustrated ②.

Hold shield and slide the arm/holder up ③. Rotate the top of the arm away from the shield and slide the lower bracket out of the track in the shield as illustrated ④.



To install holding arms, first center the screw of the lower bracket on slot in the shield, being careful to follow the correct angle as illustrated ①. Pressing the arm and shield together firmly at the lower bracket ②, rotate both inward to bring the upper shield hook into place as illustrated ③. With the upper hook and lower bracket in place, slide the arm down until the upper hook is in place ④ and the curled end of the lower bracket locks into place as illustrated ⑤.

#### **WARNING:**

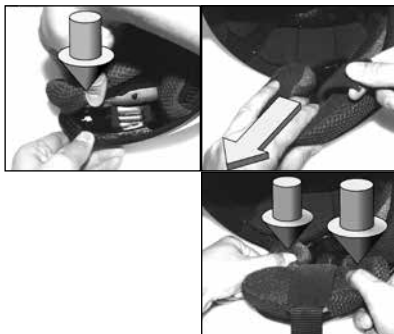
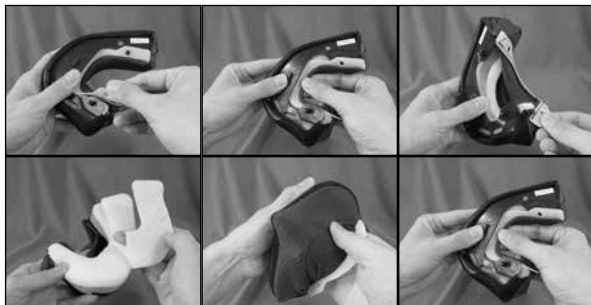
Confirm that the curled end of the bracket is fully seated between the shield and arm to prevent the shield and arm from becoming separated unintentionally.

#### **TO REMOVE/REPLACE EARCUPS**

The earcups are secured to their base plates by bosses A , B and C.

To remove earcup, first undo chinstraps, then remove bosses A & B from its base plate by grasping upper part of earcup on one side and pulling toward you until a snap is heard, then do the other side of the same earcup.

When both sides are free, push lower part of earcup into the helmet and pull upward to release tab C.



To wash earcups, put them into lukewarm water with small amount of laundry soap or your own shampoo and wash gently by hand. Rinse well with fresh water and wipe off with a soft cloth. Dry them in shade at ambient temperature.

RAM-X earcup is equipped with a 5mm surface foam layer. The layer is removable to offer a bit more room if desired. To remove layer, remove white frame from two bosses of the earcup on backside, and pull frame out from earcup. Turn frame over to expose layer. Gently remove the layer. The 5mm surface foam layer also has a small removable part just for the arms of eyeglasses. This small piece can be removed to offer a bit more room for glasses to be worn while wearing the helmet. Follow the same steps above to reveal the 5mm surface foam layer, and you will find the entire top corner of the surface foam, yellow foam, and dark grey backing foam precut ready to be removed. Stretch cover over pad and into place, adjusting it to lie smoothly. Slide white frame into receptacle of the earcup and push the rest into two bosses.

To replace earcup (note that the L & R embossed on the cup bases indicate Left and Right inside of the helmet when the helmet is worn), push the lower tab C into its receptacle and pull downward until it is fully snapped into place.

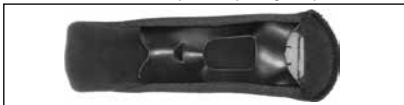
Ensuring that the strap is in the correct position, place two top tabs A & B over their receptacles and push them home until a snap is heard from each and work the strap fully into position.



## TO REMOVE/REPLACE CHINSTRAP COVERS

The chinstrap cover is secured to its base plate over the chinstrap anchor by the tab. Push tab upward to release it from the base plate. Slide the cover off the strap.

Left chinstrap cover (D-ring side)



Right chinstrap cover (long side)



Note the right and left, inside and outside of the chinstrap covers for replacement.

To wash the chinstrap covers, put them into lukewarm water with small amount of laundry soap or your own shampoo and wash gently by hand. Rinse well with fresh water and wipe off with a soft cloth. Dry them in the shade at ambient temperature.

**WARNING:**

Never use petrol, thinner, benzene or any other solvents.

To replace the left chinstrap cover (D-ring side), ensure the female chinstrap end snap side of the chinstrap and the leatherette side of the chinstrap cover both face outward, slip the chinstrap cover onto the chinstrap.

Position the tab on the chinstrap cover over the base plate on the chinstrap anchor. Push tab into its receptacle and pull the strap cover downward until it is fully snapped into place.

To replace the right chinstrap cover (long side), ensure the cap side of the chinstrap end snap (Arai logo impressed) on the chinstrap and the leatherette side of the chinstrap cover both face outward, slip the chinstrap cover onto the chinstrap.

Position the tab on the chinstrap cover over the base plate on the chinstrap anchor. Push tab into its receptacle and pull the strap cover downward until it is fully snapped into place.



## TO REMOVE/REPLACE COMFORT LINING

The comfort lining is secured to the helmet by 4 plastic bosses.

To remove the lining, undo 4 bosses by grasping the lining as close to each boss as possible and pulling straight up. Note the front & back, left & right sides of the lining for replacement.

RAM-X lining is equipped with removable temple pads to offer a bit more room if desired. To remove pads, open the pocket on each side of the lining and gently remove pad from the pocket. If you wish to replace them in the pockets, use double sided tape to fix them in place.

To wash the comfort lining, put it into lukewarm water with small amount of laundry soap or your own shampoo and wash gently by hand. Rinse well with fresh water and wipe off with a soft cloth. Dry it in the shade at ambient temperature.

### **WARNING:**

Never use petrol, thinner, benzene or any other solvents.

To replace the lining, place the 4 bosses over their plastic receptacles and push them home.

### **WARNING:**

When reinstalling the comfort lining, be sure the lining is properly positioned along the inside shape of the EPS (a.k.a. Styrofoam) liner. If the comfort lining is not properly installed, the frame of the comfort lining may fold when you put on and take off the helmet, which may injure your skin, etc. Whenever you feel something is wrong with the comfort lining, check that the lining is properly installed.













Helmet Specifications subject to Change Without Notice.

**Contact to:**

**ARAI HELMET, LIMITED**  
12 Azuma-cho, 2-chome  
Omiya, Saitama  
Japan 330-0841

**ARAI HELMET(AMERICAS), INC.**

P.O. Box 787  
Fogelsville, PA 18051-0787  
U.S.A.