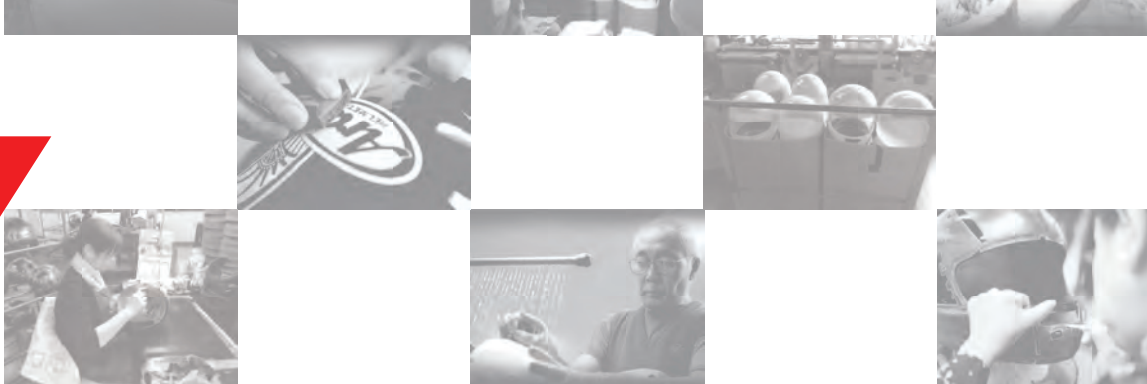




Experience makes the difference.



# Table of Contents



## TABLE OF CONTENTS

Who is Arai	03
R75	04
FCS® Facial Contour System	06
The Arai Fit	07
Interior Liners and Cheek Pads	08
Shared Features	09
Models at a Glance	10
Pro Shade System	11
Corsair-V RC	13
Corsair-V	15
RX-Q	19
Signet-Q Pro-Tour	23
Signet-Q	25
Defiant Pro-Cruise	29
Defiant	31
Vector-2	35
CT-Z	38
XC	39
XD4	40
VX-Pro4	45
Warranty	49
Pinlock	51

## ON THE COVER:

In our workshop in Omiya, Saitama, Japan, an Arai craftsperson applies the finishing touches to one of our handmade helmets. Every Arai helmet is built with this level of care and attention to detail. Our riders deserve nothing less.

## WHO IS ARAI?

The history of Arai the company begins with Arai the man. Our founder, Hirotakē Arai, was an avid motorcyclist who saw very early the need for real-world protection of riders. He was the first to use light yet strong fiberglass shells in the manufacture of his helmets. It was nothing less than a revolution in rider protection.

His son, Michio Arai, has followed in his father's footsteps, expanding the company into international markets while remaining firmly devoted to the company's core philosophy of providing the absolute best way to protect riders from real-world danger. Just like his father, Michio Arai is a passionate rider who understands well what a motorcyclist faces on the street or on the track. And, having grown up learning the business alongside his father, he knows helmets inside and out. That's why Mr. Arai insists that, even today, all Arai helmets begin with a handmade fiberglass shell.

This relentless focus on protection has created a unique culture at Arai, one that has attracted many other passionate riders. You can see this every day in the company parking area. That devotion to the sport is something we believe sets Arai apart.

The Arai of today works to be better than the Arai of yesterday - quite a challenge considering that many already acknowledge our helmets to be the best in the world. We push ourselves because we know that no established laboratory standard can ever accurately represent the unpredictable forces a rider faces in the real world. Instead, we pursue our own standards of protection. This promise of continuous improvement and refinement comes straight from Mr. Arai himself and is represented every time the Arai name is placed on the front of one of our helmets.



Hirotakē Arai



Michio Arai



Akihito Arai



# The R75 Shape

## THE ABILITY TO SLIDE OVER AND GLANCE OFF OBJECTS TO DIVERT ENERGIES IS A CRUCIAL HELMET FUNCTION.

Fact: kinetic energy of a moving object increases in proportion to the square of the speed of that object. This means that a street rider traveling at the legal speed limit can exceed the strictest helmet safety standard for kinetic energy protection by 12 times. No helmet, regardless of brand, can be expected to manage such extremes. However, history has shown that some helmets have performed well under these conditions and even at higher race speeds. This would suggest that helmet protection can be measured by another standard, one that works in conjunction with impact protection.

## A ROUNDER, SMOOTHER AND STRONGER SHELL IS BETTER ABLE TO SLIDE ACROSS UNEVEN SURFACES AND GLANCE OFF OBSTACLES MORE EASILY.

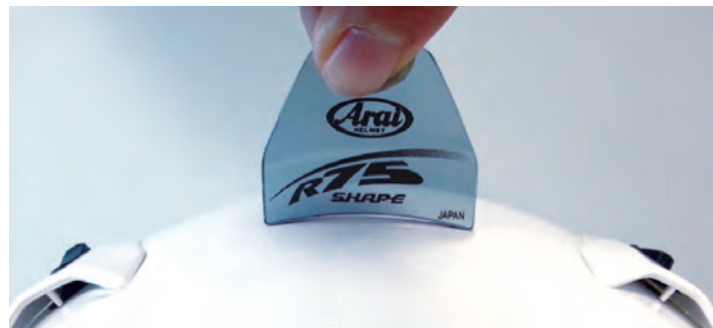
This reduced friction also helps to minimize excess rotational forces on the helmet (and, correspondingly, the head inside it). Throughout our long history of lessons learned on both the street and the track, Arai has seen this fact borne out repeatedly.

## THAT'S WHY ARAI HAS DEDICATED ITSELF TO THE R75 SHAPE - A CONTINUOUS, CONVEX CURVE OF A MINIMUM RADIUS OF 75MM - FOR ALL OF OUR HELMETS.

R75 may sound technical, but it's quite simple to understand. The R75 gauge demonstrates how Arai helmets maintain the 75mm radius curve wherever possible. When you visit your Arai dealer, ask him to show you how your chosen Arai helmet conforms to the R75 shape concept.

## R75 ISN'T AN INDUSTRY STANDARD. IT'S AN ARAI STANDARD.

We believe a helmet should be designed to handle the unexpected. And because no helmet can manage all potential impact energy, avoiding or diverting potential impact energy should also be a key function of a helmet. This is why R75 is one of the most important in-house standards Arai enforces.



The Arai R75 gauge in use. Wherever the two ends of the gauge are touching, the helmet is conforming to the R75 shape concept.

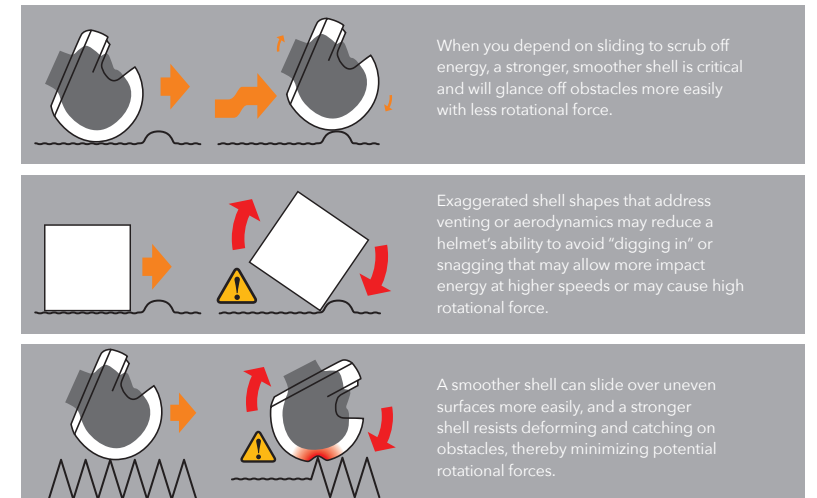
(NOTE: R75 does not apply to areas below the test line, visor attachment area, ventilation ducts and previous open-face Classic/m-based models.)

## ROUNDER, SMOOTHER, STRONGER SHELL.

A ROUNDER SHELL provides strength in its shape, allowing for the use of less material, making the helmet smaller and lighter.

A SMOOTHER SHELL slides more easily over uneven ground and glances off obstacles with less potential rotational force.

A STRONGER SHELL resists penetration of sharp objects and resists deformation, which could concentrate energy in too small an area. Shell deformation may also allow excessive rotational force.



## MULTI-DENSITY ONE-PIECE EPS LINERS.

A helmet is, first and foremost, an Energy Management System. Everything else - from ventilation, aerodynamics and shield systems to radios, Bluetooth and cool graphics - is secondary. So none of them should ever interfere with the helmet's number-one job of impact energy management. One of the main ingredients in this complex network of integrated components charged with energy management is the EPS liner.



Given Arai's obsession with rider protection above all else, our EPS liners are one piece, not multiple pieces fitted together with the potential for gaps or poor bonding. One piece. An extremely complex and singular achievement that took years for Arai to develop and perfect. And if that was all that distinguished an Arai liner, it would be major. But it doesn't stop there.

Each Arai EPS liner has multiple densities. Various densities throughout the entire liner address specific impact needs. That's one of the factors in Arai's unparalleled comfort. In fact, depending on the model, Arai street helmets can have up to four different densities in a single liner. (Our Formula 1 auto racing helmet liners have five.)



## FCS® Facial Contour System



### AT ARAI, EVEN A SIMPLE CHEEK PAD IS ANYTHING BUT SIMPLE.

Mr. Arai is fond of saying, “There are no minor parts of an Arai helmet. Each part contributes to the whole, to try to improve the benefits and the experience of wearing an Arai. It is one of the things that make us different.”

The revolutionary, patented FCS® Cheek Pad design is a prime example of this philosophy of maximizing the contribution of every part of an Arai helmet.

The FCS® design cannot be overemphasized. Its contoured shape – combined with multiple layers of varying foam densities supported by a patented foam “spring” – cradles the face like nothing that has ever come before, even from Arai.

The FCS® pads’ patented design simultaneously holds the cheek and jawbone firmly for a secure fit, while making gentle contact with the soft areas of the cheek for incredible all-day comfort without excess pressure. And the contoured padding moves out of the way so the helmet can be put on and taken off without the cheek pads hindering it.

5mm peel-away custom-fit layer pads add another level of micro-fit customization without the need to purchase extra interior components, underscoring Arai’s attention to all aspects of comfort and fit. (To complete the effort, 5mm peel-away custom-fit temple pads – being phased into future models when possible – in the comfort liner do the same thing.)

Another major bonus of the new design is the effect it has on lowering interior noise levels by blocking more wind noise from entering the bottom of the helmet from the turbulent airflow above the shoulders – the main source of wind noise on low-windshield or unfaired bikes.

And of course, the FCS® design also has Arai’s Emergency Cheek Pad Release System – yet another Arai innovation now copied by other companies. This groundbreaking Arai advancement was specifically developed to allow easier access to an injured rider by making the cheek pads easier to slide out, making helmet removal easier for trained medical personnel. (Another example of where Arai’s priorities are.)

The result: In the hands of Arai’s engineers and artisans, a simple cheek pad – a small and common part of every motorcycle helmet – is transformed, combining the multiple benefits of unrivaled comfort and support, reduced wind noise, reduced distraction, easier helmet on/off and micro-tuned fit ability.



### 1. 5MM PEEL-AWAY CHEEK PAD

The 5mm peel-away cheek pad allows you to micro-tune the fit to your head by giving you 5mm of extra padding that can be removed without the need to buy an optional cheek pad set.

### 2. FCS® SPRING SUPPORT

Innovative and exclusive spring support adds just the right amount of pressure when needed while being worn, but seamlessly “gets out of the way” when putting on and taking the helmet off.

### 3. EMERGENCY CHEEK PAD REMOVAL SYSTEM

Arai’s groundbreaking Emergency Cheek Pad Removal System was specifically developed to allow easier helmet removal from an injured rider by trained emergency medical personnel.

## The Arai Fit: Why It’s Like No Other

### ARAI IS THE ONLY COMPANY OFFERING MULTIPLE INTERIOR-FIT SHAPES TO BETTER ADDRESS THE INFINITE VARIETY OF RIDERS’ HEAD SHAPES AND SIZES.

No one pays more attention to the subtle variations and infinite possibilities of the human head shape than Arai. Why? Because it’s the secret to getting the best comfort and fit.

### FINDING THE RIGHT SIZE AND FIT.

The first step is understanding how a helmet is supposed to fit. As an ENERGY MANAGEMENT SYSTEM, a helmet’s number-one job is to manage the energy of an impact it can’t predict. (Pretty paint and graphics are just there to make it look good.)

**“Facing” A Potential Problem:** Some riders get concerned about getting the helmet to fit over their faces. We find many such riders wearing helmets up to two sizes too big. That’s because, when you can’t get the helmet past your cheeks or jaw, you think it’s too small, and you reach for a bigger size. But your brain’s not in your face. That’s why it’s important to focus on your head size. Remove the cheek pads to keep them from interfering with getting the helmet on. Then try on helmet sizes until you get the proper crown fit.

**The Proper Crown Fit:** Remember, snug is good. For the most comfort, the interior must fit snugly all around the crown of your head. (The crown is the area contacted by a baseball cap’s band, for example. You should feel a firm, even pressure at all the contact points around the interior perimeter, with no tight pressure points that could become uncomfortable in the future. The perimeter pads should be supporting most of the helmet weight, with the top crown pad touching the top of your head and supporting only some of the helmet weight.

**Don’t Guess Size:** Try the helmet on for awhile before you buy it. Don’t think you know your shape or size – make sure. Shape and fit can change as helmet models evolve – even from the same brand. You’ll find an excellent video on getting the right fit on our website at [araiamericas.com/thefit](http://araiamericas.com/thefit).



**Start:** Get your head measured to get an idea of where to start. The image here shows the proper placement of a measuring tape to get the most accurate measurement.

### HELMET FIT: HOW HARD CAN IT BE?

If helmet companies made helmets individually for every rider, fit would be much less of a problem. They’d take the measurements for each head, and that would be it. Perfect.

The problem is that helmet manufacturers are making helmets to fit a world of people – literally. A world of shapes, angles, widths, bulges, recesses, etc. (Snowflakes aren’t the only things where no two are alike.)

The difference in how helmets are made to fit the world of people is what separates Arai from every other manufacturer.

Arai believes there are discerning enthusiasts with the riding experience and awareness to appreciate the countless benefits of a better-made, better-fitting helmet. (Arai riders typically ride further than roadhouse to roadhouse. And while it was accepted that we could never build the perfect-fitting helmet for everyone, that doesn’t mean we can’t try. No matter how time- and effort-intensive and costly. It’s our mission.

**So for more than three decades, Arai has pioneered different shapes – and even different proportions within those shapes – in our various helmet models, working to offer a better fit for more people.**

### DETERMINING YOUR ARAI INTERIOR-SHAPE FIT.

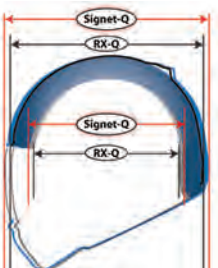
Most North American heads tend to be more oval than round (somewhat longer front-to-back, narrower side to side). Our different Arai models vary slightly based on that general oval shape to accommodate a much wider fit range.

### CASE IN POINT: THE ARAI RX-Q AND SIGNET-Q MODELS:

A longstanding successful Arai shape has been the Intermediate Oval (I/O), currently found in our RX-Q model.

Then, because we constantly measure heads to learn where we can improve, we recently measured the head shapes of nearly 750 consumers across the U.S., providing us with the firsthand information that led to the development of our latest Long Oval (L/O) helmet, the Signet-Q. We again used the Signet model name, which was used years ago and was well-known for its very long narrow interior shape, but updated the (L/O) shape to address a larger segment of the U.S. market.

**A helmet needs to be tried on in order to determine a proper fit.** With an Arai helmet, regardless of your presumed head shape, a side-by-side test fit, like an RX-Q against a Signet-Q, will give an apples-to-apples comparison to find your best fit. And, not surprisingly, in some cases your “perfect” fit isn’t the interior shape you thought or were told you were.





Arai's Latest "Perfect Fit"

ARAI'S LATEST "PERFECT FIT" INNOVATION: MICRO-FITTING CHEEK AND SIDE/TEMPLE PADS.

Even after laboring over different shapes and dimensions, we recognize there is still an infinite number of shapes that fall between our sizes and interior fits. So Arai takes fitting to an even greater level by incorporating micro-fit pads that allow you to give yourself a little extra room if needed, without having to purchase extra interior options. This allows you to stay in your proper size rather than the traditional solution of moving up a size, which decreases comfort and performance while increasing noise and movement.

Currently our two main fit packages - RX-Q (I/O) and Signet-Q (L/O) - provide suitably different and unique solutions for the extremes of head shapes, while offering new micro-fitting options to help a few more of the extremes and in-betweens find a better fit.

We constantly encourage Arai dealers to stock a size selection of all Arai models to provide a direct comparison opportunity for their customers. As a consumer, you are encouraged to seek out one of those dealers and/or request that your dealer make the effort.

INTERIOR LINERS AND CHEEK PADS.

Optional interior liners and cheek pads of different thicknesses allow you to custom fit your Arai helmet. To order a liner of a different thickness, start with the Lining Code that matches your helmet size, then specify the desired thickness. For example, an optional 5mm liner for a large helmet would be specified as a "III-5mm" liner.



INTERIOR LINING THICKNESSES

● STANDARD | ○ OPTIONAL

CORSAIR-V RC			
	Size	HCM* (cm)	Lining Code
XXS	XXS	52	I
XS	XS	53-54	I
S	S	55-56	II
M	M	57-58	III
L	L	59-60	III
XL	XL	61-62	IV
XXL	XXL	63-64	V
XXXL	XXXL	65-66	V

CORSAIR-V/RX-Q			
	12 mm	10 mm	7 mm
XXS			
XS			
S			
M			
L			
XL			
XXL			
XXXL			

SIGNET-Q/ SIGNET-Q PRO-TOUR			
	12 mm	10 mm	7 mm
XXS			
XS			
S			
M			
L			
XL			
XXL			
XXXL			

DEFIANT/ DEFIANT PRO-CRUISE			
	12 mm	10 mm	7 mm
XXS			
XS			
S			
M			
L			
XL			
XXL			
XXXL			

VECTOR-2			
	12 mm	10 mm	7 mm
XXS			
XS			
S			
M			
L			
XL			
XXL			
XXXL			

CT-Z/XC			
	12 mm	10 mm	7 mm
XXS			
XS			
S			
M			
L			
XL			
XXL			
XXXL			

XD4			
	12 mm	10 mm	7 mm
XXS			
XS			
S			
M			
L			
XL			
XXL			
XXXL			

VX-PRO4			
	12 mm	10 mm	7 mm
XXS			
XS			
S			
M			
L			
XL			
XXL			
XXXL			

CHEEK PADS

\*HCM (Head Circumference Measurement) should be a starting point only in determining your helmet size. Determining the best possible fit should be from actual test fittings of Arai's various interior fit packages. Changes and updates can affect the standard pad thickness supplied with your helmet.

CORSAIR-V RC		
	Thicker (mm)	Standard (mm)
XXS	-	-
XS	30	25
S	30	25
M	30	25
L	25	20
XL	20	15
XXL	-	-
XXXL	-	-

CORSAIR-V/RX-Q		
	Thicker (mm)	Standard (mm)
XXS	-	-
XS	30	25
S	30	25
M	30	25
L	25	20
XL	20	15
XXL	-	-
XXXL	-	-

SIGNET-Q/ SIGNET-Q PRO-TOUR		
	Thicker (mm)	Standard (mm)
XXS	-	-
XS	35	30
S	35	30
M	35	30
L	30	25
XL	30	25
XXL	25	20
XXXL	-	-

DEFIANT/ DEFIANT PRO-CRUISE		
	Thicker (mm)	Standard (mm)
XXS	35	30
XS	30	25
S	30	25
M	30	25
L	25	20
XL	25	20
XXL	25	20
XXXL	20	15

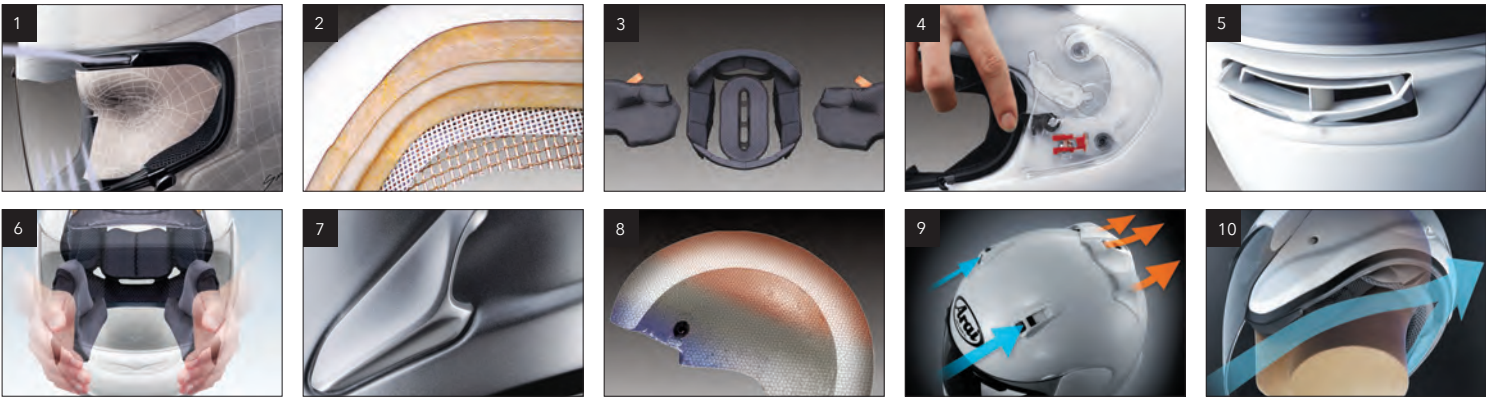
VECTOR-2		
	Thicker (mm)	Standard (mm)
XXS	35	30
XS	30	25
S	30	25
M	30	25
L	25	20
XL	25	20
XXL	25	20
XXXL	20	15

CT-Z/XC		
	Thicker (mm)	Standard (mm)
XXS	-	-
XS	30	25
S	30	25
M	35	30
L	30	25
XL	30	25
XXL	30	25
XXXL	25	20

XD4		
	Thicker (mm)	Standard (mm)
XXS	-	-
XS	30	25
S	30	25
M	35	30
L	30	25
XL	30	25
XXL	30	25
XXXL	25	20

VX-PRO4		
	Thicker (mm)	Standard (mm)
XXS	-	-
XS	30	25
S	30	25
M	35	30
L	30	25
XL	30	25
XXL	30	25
XXXL	25	20

Shared Features



1. BROW VENT CHANNELING

Brow-vent inner ducts redirect incoming air to the temples, instead of the forehead, and around the ear area (missed by many helmet ventilation systems). The stale air is then extracted out the side exhaust cowls. The airflow over the temporal artery reportedly also helps cool the blood flow to the brain area. This simple repurposing of two existing vent features greatly improves helmet performance and rider comfort.

2. SHELL CONSTRUCTION

Arai's decades of experience, research, testing, comparison and evaluation have concluded that fiberglass-based construction is ideal for performing a helmet shell's main job - dispersing impact energy over the widest area through strength, structural integrity and impact flexibility (although Arai's R&D study and testing of alternative shell technologies is always ongoing). The shell utilizes our proprietary aerospace fiberglass to achieve an exceptionally strong, flexible, yet lightweight shell.

3. REMOVABLE, WASHABLE LINER

Another Arai innovation first introduced in the late '80s, our fully removable, washable and replaceable interior comfort-liner components also permit micro-fitting of a helmet in between size scenarios.

4. LRS SHIELD REMOVAL

Watch racers Nicky Hayden and Kenny Roberts, Jr., swap Arai faceshields on video while wearing their helmets and you'll see for yourself how easy Arai's LRS tool-less system really is. And if you go to The Arai Difference page on AraiAmericas.com, you'll read why we continue to use side pods when others have gone to easier-to-make pod-less systems.

5. PATENTED DUAL-PIVOT CHIN VENT

This easy-to-operate, two-position dual-pivot hinge mechanism allows for increased chin vent airflow capacity to two areas: the first position directs air to the face through an activated carbon-coated foam filter, the second sends the air to the faceshield to aid de-fogging.

6. FCS®

Arai's peel-away FCS® Cheek Pad design delivers comfort and support. It features our 5mm peel-away custom-fit layer and Emergency Release System.

7. SIDE VENT COWLS

Sculpted to enhance stability while increasing exhaust efficiency, the side vent cowls are tailored to the needs and speeds of the street.

8. EPS LINER

Arai's EPS liner is like no other, comprised of several material densities molded into a single piece. Arai pioneered this technology more than 20 years ago and is still, to our knowledge, the only helmet offering this liner and its unique benefit. The directly fused contact area that each EPS cell shares with its neighboring cells creates mutual support. As one is crushed under impact, the surrounding cells assist with the energy absorption. (Liner pieces that are simply fitted or glued together cannot rely on such a high-level support bond.)

9. ADVANCED INTAKE/EXHAUST VENTILATION

Arai's advanced intake/exhaust ventilation provides a more directed airflow. The exhaust vents are designed to draw a more significant volume of air from the helmet's interior.

10. REAR NECK EXHAUST DUCT

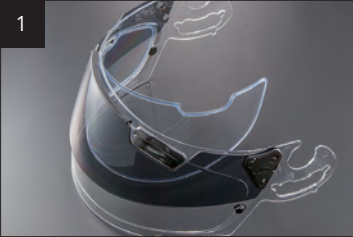
A perforated duct at the base of the lining aids in the removal of stale air from the helmet interior.

Models At a Glance

Features & Benefits

	● STANDARD   ○ OPTIONAL		CORSAIR-V	RX-Q	SIGNET-Q	SIGNET-Q PRO-TOUR	DEFIANT	DEFIANT PRO-CRUISE	VECTOR-2	CT-Z	XC	XD4	VX-PRO4
<b>PB-SNC (Peripheral Belting-Structural Net Composite)</b> The Peripheral Belt extends across the forehead area of the shell above the eye opening, enhancing the structural integrity while maintaining flexibility, low weight and shell size. Incorporated into Arai's most advanced shell, SNC uses proprietary net strands that bond shell layers even more rigidly, allowing for the shell weight to be almost three ounces less and provide a lower center of gravity.	●												
<b>ScLc (Super Complex Laminate Construction)</b> 40% stronger than standard fiberglass in extension and bending resistance. Commonly referred to as F.A.S.T. (Fiberglass Aerospace Shell Technology) construction due to its development heritage.		●	●	●	●	●	●	●		●	●		
<b>cLc (Complex Laminate Construction)</b> Contains a specially designed felt that is sandwiched between the two layers of Super Fiber Laminate. The felt acts as a reinforcement layer without adding significantly to the weight of the helmet.									●			●	●
<b>Hyper-Ridge</b> The reinforcement band circles the bottom of the shell, adding strength and lowering the helmet's center of gravity.										●	●	●	●
<b>Outwards-Flaring Hyper-Ridge</b> Flares out to provide a larger opening so that the helmet is easier to get on and off. The reinforcement band circles the bottom of the shell, adding strength and lowering the helmet's center of gravity.	●	●	●	●	●	●	●	●	●				
<b>Extreme Peripheral View</b> 10mm wider eye port (5mm each side) greatly enhances peripheral view.	●	●	●	●	●	●	●	●	●				
<b>LRS Shield Removal</b> Allows for shield changing without tools or removal of the side pods.	●	●	●	●	●	●	●	●	●		●		
<b>De-Mist Lock</b> Faceshield tab pushes forward to open the shield and help clear any fog that may appear.	●	●	●	●	●	●	●	●	●				
<b>Pull-Down Air Spoilers</b> Helps minimize wind noise. Also aids with the extraction of the hot air from the face area.	●	●	●	●	●	●	●					●	
<b>Cowl Vent Design</b> Exhausts heat more efficiently. The vents are sculpted into the rear shell shape and work in concert with the AirWing to greatly add lateral helmet stability at speed (Arai test riders reported this benefit is most noticeable when popping up into the airflow when braking).	●	●	●	●	●	●	●	●		●	●	●	●
<b>Brow Vent Channeling Ventilation</b> Gives you more cooling air in the temple and/or forehead area without holes in the critical forehead area of the shell or impact-absorbing liner.	●	●	●	●	●	●	●	●	●	●	●	●	
<b>FFS (Free Flow System)</b> Helps reduce wind noise and turbulence while increasing the exhaust of hot air.	●	●	●	●	●				●				
<b>IR Front-Spoiler Edge Trim</b> Creates a stabilizing downforce, reducing wind noise between the shoulder and the bottom of the helmet.							●	●					
<b>Chin Vent Shutter</b> Is a closable gate behind the center vent that allows the vent to be closed for extreme weather conditions.												●	●
<b>DF-M Top-Mounted Diffuser Vents</b> Medium-sized diffusers that can easily be removed or replaced due to damage as a result of harsh off-road environments.												●	
<b>DF Diffuser</b> Has enhanced air inlets to increase airflow efficiency. The middle-intake slot creates an accelerated venturi effect for faster venting of stale air. The center top vent has been resculpted to provide more air intake; it also has a larger toggle.	●									●			
<b>IC4 Duct Intake Vents</b> Have a slide-gate closure that seals more completely when closed.							●	●					
<b>ACR4 Duct</b> Allows air to pass over and through the vent, accelerating exhaust flow when open and reducing drag when closed.							●	●					
<b>Removable/Replaceable Cheek Pads</b> Give you a more custom fit by enabling you to replace standard sizes with optional sizes.											●		
<b>FCS® Cheek Pad Design</b> A spring support that adds just the right amount of pressure when worn and releases to create extra room when the helmet is removed. The 5mm peel-away layer offers unparalleled custom fitting.	●	●	●	●	●	●	●	●	●	●		●	●
<b>Emergency-Release Cheek Pads</b> Allow for easier access to an injured rider by sliding out via integrated pull tabs built into the underside of the cheek pad.	●	●	●	●	●	●	●					●	●
<b>Water-Repellent Cheek Pads</b> Advanced material on the cheek pads keeps the exposed areas of the cheek pads from absorbing water in wet conditions.							●	●					
<b>Sound-Absorbing Ear-Pad Foam</b> A layer of foam in the ear pocket to help block assorted noises from reaching your ears.	●	●	●	●	●	●	●	●	●	●	●	●	●
<b>Removable/Replaceable Neck Roll</b> Easily removes and re-installs for thorough washing or replacement if damaged.	●	●	●	●	●	●	●	●					●
<b>Eco-Pure Liner</b> New exclusive liner with "Eco-Pure" antimicrobial material stays fresher between cleanings.					●			●					
<b>Pro Shade System</b> Offers a quick, convenient shade to block ambient light, while functioning as an aerodynamic peak in the raised positioning, helping to block sudden bursts of light. Compatible with any Arai using the SAI shield.	○	○	○	●	○	●	○						
<b>SAI Shield</b> The latest generation of Arai's Super AdSis shield system, designed for the new 10mm wider eye port. Removes and installs in seconds.	●	●	●	●	●	●	●	●					
<b>Max Vision Pinlock Shield</b> Combines enhanced field of view of the SAI eye port with a full eye-port cavity to accept the Pinlock 100% Max Vision antifog lens.	○	○	●	●	●	●	○						

Pro Shade System



Enhance your ride.

Adventure touring riders love the benefits of having the peak on their XD4 helmets when riding toward the sun, especially at sunrise or sunset. Touring riders also get similar results from the CT-Z. What about the rest of us? The new Arai Pro Shade System replaces the faceshield of any current Arai full-face helmet that uses the SAI-type shield. When raised, the shield works like a peak, minimizing glare when the sun is higher in the sky. Lowering the shield reduces the amount of light entering the helmet, particularly beneficial when the sun is lower in the sky. The shield can be quickly and easily raised and lowered by the rider depending on riding conditions. The movable portion of the shield is designed to break away easily in the event of impact and does not compromise the energy management capability engineered into the helmet shell.

**1. MAX VISION BROW VENTED SHIELD:** The Pro Shade System comes installed on a Max Vision Brow Vented shield, providing an excellent field of view and maintaining the benefits of Arai's Brow Vent intake ducts. The optional Clear Max Vision Brow Vented Pinlock antifog insert (shown above) reduces fogging without limiting your field of view. **2. TO RAISE SHADE:** Easily lift at the center with your thumb, then lock by pushing back to secure both pivots. **3. TO LOWER SHADE:** Simply pull shade forward at the center to disengage locks at both pivot points, then lower shade.



The Pro Shade System not only offers a quick, convenient shade to block ambient light, but also acts as an aerodynamic peak to block sudden bursts of light with a subtle dip of your head, allowing your hands to stay on the bars, right where they need to be.





## Corsair-V RC

Racing Carbon



*So rare, so special, that if you want one, you have to place an order for it.*

**1. CARBON FIBER FROM ARAI'S FORMULA 1 RACING:** Based on Arai's F1 GP helmets' GP-6RC technology, the Corsair-V RC uses the same CF found on the newest generation of commercial airliners, combined with Arai's own resin plus Zylon reinforcement. **2. ARAI'S PERIPHERALLY BELTED CARBON FIBER SHELL CONSTRUCTION:** The extremely strong, flexible and light carbon fiber outer shell is reinforced with Arai's exclusive Peripheral Belt (extending across the shell's forehead area above the eye port). **3. DIFFUSER VENTILATION:** The DF-10 offers enhanced air inlets to increase airflow efficiency. A middle-intake slot creates more negative pressure "pull" for even faster venting of stale air. Larger upper-vent toggles work with thick gloves, and the center top vent is resculpted for more air intake. **4. PATENTED AIRWING:** Arai's exclusive, adjustable AirWing is designed to reduce drag, turbulence and buffeting. **5. FCS® CHEEK PADS:** Arai's patented peel-away FCS® Cheek Pad design delivers comfort and support, and it features our 5mm peel-away custom-fit layer and Emergency Release System. This gives you a real idea of where Arai's priorities lie. **6. PRO SHADE SYSTEM COMPATIBLE:** This model accepts the optional Pro Shade System.





## Corsair-V



White



*State-of-the-art motorcycle helmet design as only Arai can achieve it.*

**1. PERIPHERAL BELTING & STRUCTURAL NET COMPOSITE:** Created for Arai's Formula 1 helmets, the belt extends across the shell's forehead area above the eye-port opening, enhancing the structural integrity while maintaining flexibility and low weight. It's incorporated into Arai's advanced SNC (Structural Net Composite) shell construction that uses proprietary net strands that work like rebar to bond shell layers more securely for even better shell integrity.

**2. SIDE-VENT EXHAUST PORTS:** The sculpted exhaust ports are designed to clear interior air and heat more efficiently.

**3. PATENTED AIRWING & DF-10 DIFFUSER:** Arai's exclusive, adjustable AirWing is designed to reduce drag, turbulence and buffeting. It provides unprecedented aerodynamic performance options via five adjustable positions. The DF-10 offers enhanced air inlets to increase airflow efficiency. A middle-intake slot creates more negative pressure "pull" for even faster venting of stale air. Larger upper-vent toggles work with thick gloves, and the center top vent is resculpted for more air intake.

**4. FCS® CHEEK PAD DESIGN & EXCLUSIVE 5MM PEEL-AWAY LAYER:** FCS® uses an innovative and exclusive spring support built into the cheek pad to add just the right amount of pressure when needed while being worn, but then easily moves out of the way for easier helmet on/off. The cheek pads feature a 5mm peel-away layer for added room if you need it, giving you even more ability to craft the perfect fit and comfort for your face.

**5. LATEST-GENERATION DRY-COOL VENTED NECK ROLL:** The fully removable liner, utilizing Arai's Dry-Cool® material, transfers heat and moisture away from the rider quickly and efficiently. The neck roll is not only removable and replaceable, it also adds yet another stale-interior-air exhaust outlet through channels in the EPS liner.

**6. EMERGENCY CHEEK PAD RELEASE SYSTEM:** This now-copied groundbreaking Arai innovation was specifically developed to allow easier access to an injured rider by sliding out, making helmet removal easier for trained medical personnel. This gives you a real idea of where Arai's priorities lie.

**7. PRO SHADE SYSTEM COMPATIBLE:** This model accepts the optional Pro Shade System.



Aluminum Silver



Black Frost



Black



## A collage of eight black and white photographs showing various stages of pottery production. The images include: a close-up of a hand shaping a piece of clay on a wheel; a finished ceramic bowl; a hand using a tool to shape a piece of clay; a row of finished ceramic bowls; a hand shaping a piece of clay on a wheel; a finished ceramic bowl; a hand using a tool to shape a piece of clay; and a finished ceramic bowl.



Harada T



Nakagami



Rabat



Nicky-5

7





## RX-Q



White



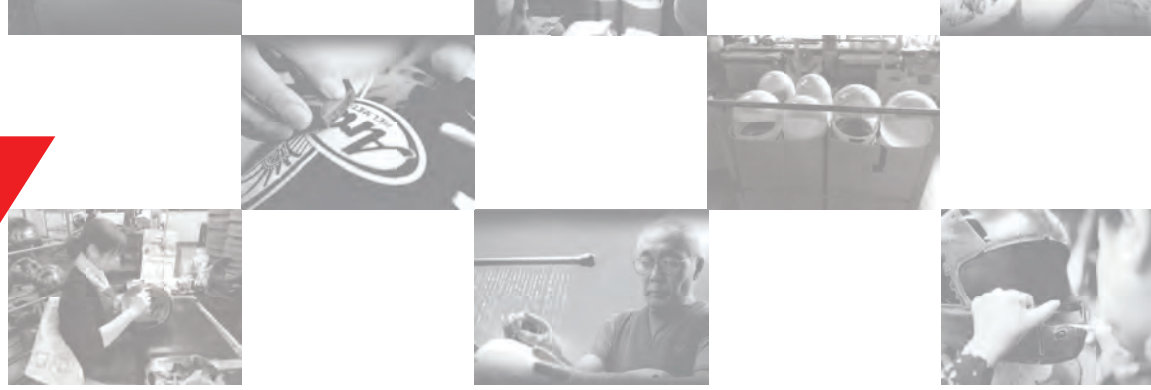
**1. MORE AERODYNAMIC UPPER- & SIDE-EXHAUST VENT COWLING:** Sculpted to enhance stability while increasing exhaust efficiency, the side vent cowls are tailored to the needs and speeds of the street. **2. BROW-VENT CHANNELING VENTILATION:** Directs more cooling air to the temple area without the need to punch holes in the critical forehead area of the shell or the impact-energy-absorbing EPS liner. **3. REMOVABLE/WASHABLE LINER & NECK ROLL:** The neck roll is not only removable and replaceable, it also adds yet another stale-interior-air exhaust outlet through channels in the EPS liner. **4. EXCLUSIVE 5MM PEEL-AWAY CHEEK PAD LAYER & EMERGENCY CHEEK PAD RELEASE SYSTEM:** The cheek pads now feature a 5mm peel-away layer for added room if needed. These are part of Arai's now-copied, groundbreaking Emergency Release System specifically developed to allow access to an injured rider by sliding out, making helmet removal easier for trained personnel. **5. PRO SHADE SYSTEM COMPATIBLE:** This model accepts the optional Pro Shade System.







RX-Q



Electric Red



Electric Green



Flame



DNA White



DNA Black



Italy Flag



75 Retro White



75 Retro Black Frost



Streak Frost



Conflict Red



Conflict Blue



UK Flag



Oriental



Oriental Matte Blue

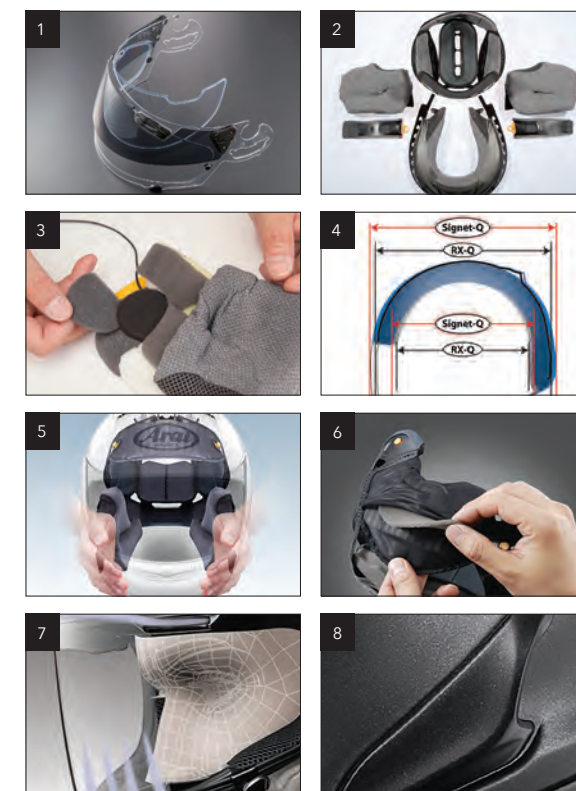




## Signet-Q Pro-Tour



Black Frost



### More features, straight out of the box.

**1. PRO SHADE SYSTEM:** The Signet-Q Pro-Tour comes pre-equipped with Arai's Pro Shade System, providing shade and reducing glare in addition to acting as a peak. A clear Pinlock insert for the Max Vision Brow Vent Pro Shade comes standard in the box and only requires a minute to install.\* **2. ECO-PURE LINER:** The Signet-Q Pro-Tour also includes a new exclusive liner with "Eco-Pure" antimicrobial material, so it stays fresher between cleanings. **3. COMMUNICATION:** The ear pockets of the new Signet-Q Pro-Tour have molded pockets to better accept speakers for a more comfortable fit. **4. THE FIT YOU'VE BEEN MISSING:** The Signet-Q's longer shell and interior shape are specifically designed for riders whose helmets can cause painful forehead "hotspots" due to interior shapes that aren't made to fit their longish heads. The illustration above shows the interior-shape difference between the Signet-Q and its Q-series stable mate, the RX-Q. **5. FCS® CHEEK PADS:** Arai's peel-away FCS® Cheek Pad design delivers comfort and support, and it features our 5mm peel-away custom-fit layer and Emergency Release System. **6. 5MM PEEL-AWAY SIDE-TEMPLE PAD:** Arai's peel-away side-temple crown pads give you the option of 5mm more of interior width if needed. Yet another level of fit customization no other helmet brand offers. **7. BROW-VENT CHANNELING VENTILATION:** Directs more cooling air to the temple area without the need to punch holes in the critical forehead area of the shell or impact-energy-absorbing EPS liner. **8. MORE AERODYNAMIC UPPER- & SIDE-EXHAUST VENT COWLING:** Sculpted to enhance stability while increasing exhaust efficiency, the side vent cowls are tailored to the needs and speeds of the street.



Scheme Green



Scheme Blue



Tactical White



Tactical Green Frost





# Signet-Q



White



**1. THE FIT YOU'VE BEEN MISSING:** The Signet-Q's longer shell and interior shape are specifically designed for riders whose helmets can cause painful forehead "hotspots" due to interior shapes that aren't made to fit their longish heads. This illustration above shows the interior-shape difference between the Signet-Q and its Q-series stable mate, the RX-Q.

**2. FCS® CHEEK PADS:** Arai's peel-away FCS® Cheek Pad design delivers comfort and support, and it features our 5mm peel-away custom-fit layer and Emergency Release System.

**3. 5MM PEEL-AWAY SIDE-TEMPLE PAD:** Arai's peel-away side-temple crown pads give you the option of 5mm more of interior width if needed. Yet another level of fit customization no other helmet brand offers.

**4. PINLOCK MAX VISION FACESHIELD:** Exclusive Pinlock 100% Max Vision faceshield included.

**5. BROW-VENT CHANNELING VENTILATION:** Directs more cooling air to the temple area without the need to punch holes in the critical forehead area of the shell or impact-energy-absorbing EPS liner.

**6. MORE AERODYNAMIC UPPER- & SIDE-EXHAUST VENT COWLING:** Sculpted to enhance stability while increasing exhaust efficiency, the side vent cowls are tailored to the needs and speeds of the street.

**7. REMOVABLE/WASHABLE LINER AND NECK ROLL:** The neck roll adds yet another stale-interior-air exhaust outlet through channels in the EPS liner - not to mention making complete helmet cleaning a breeze and, in the case of damage, a snap to replace.

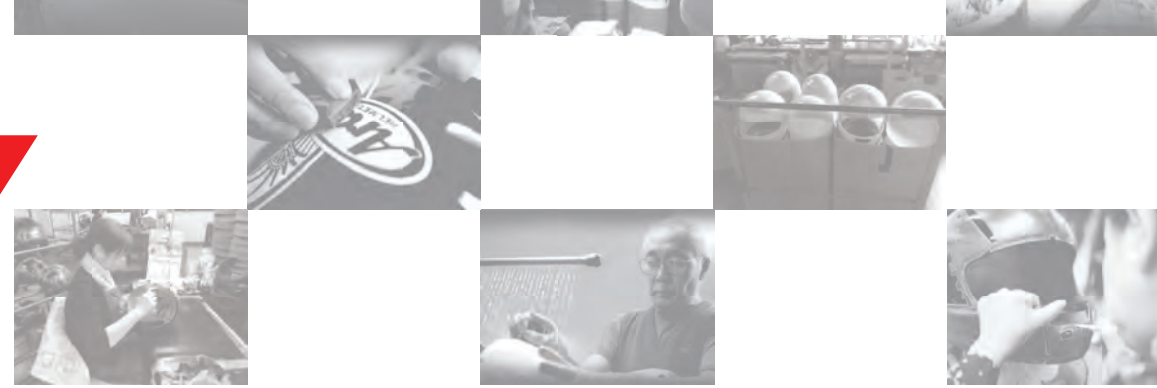
**8. PRO SHADE SYSTEM COMPATIBLE:** This model accepts the optional Pro Shade System.







## Signet-Q



Abraham



US Flag Black Frost



UK Black Jack Frost



Zero Red



Zero Silver



Hydra Frost



Bomb



Basilisk



Tropic Frost





# Defiant Pro-Cruise



Black Frost



More benefits. Better protection. Only from Arai.

**1. PRO SHADE SYSTEM:** The Defiant Pro-Cruise comes pre-equipped with Arai's Pro Shade System, providing shade and reducing glare in addition to acting as a peak. A clear Pinlock insert for the Max Vision Brow Vent Pro Shade comes standard in the box and only requires a minute to install.\* **2. WATER-REPELLENT ECO-PURE LINER:** The Defiant Pro-Cruise also includes an exclusive water-repellent liner made with "Eco-Pure" antimicrobial material, so it stays fresher between cleanings. **3. COMMUNICATION:** The ear pockets of the new Defiant Pro-Cruise have molded pockets to better accept speakers for a more comfortable fit. **4. NEW IR FRONT-SPOILER EDGE TRIM:** Creates a stabilizing downforce, reducing buffeting, lifting and wind noise that can be generated by the turbulence trapped between your shoulders and the bottom of the helmet. **5. NEW IR NECK ROLL PAD:** Has an improved shape to flow more air to the bottom of the helmet at lower speeds for enhanced rider comfort. **6. NEW IR CHIN VENT:** Offers much more than an aggressive new look. Its two-position operation provides multiple functions with tangible rider benefits. **7. FCS® CHEEK PADS:** The contoured shape - combined with multiple layers of varying foam densities supported by a patented foam "spring" - cradles the face like nothing that has ever come before, even from Arai. The spring makes on-off easier, while helping to block even more wind noise. **8. 5MM PEEL-AWAY CHEEK & SIDE-TEMPLE PADS:** Arai's exclusive 5mm peel-away surface pads on both sides of the headliner and in the FCS® Cheek Pads give you the option of 5mm more interior width if needed (minimizing the need to purchase optional thickness pads). Yet another level of fit customization no other helmet brand offers.



Mimetic Green Frost



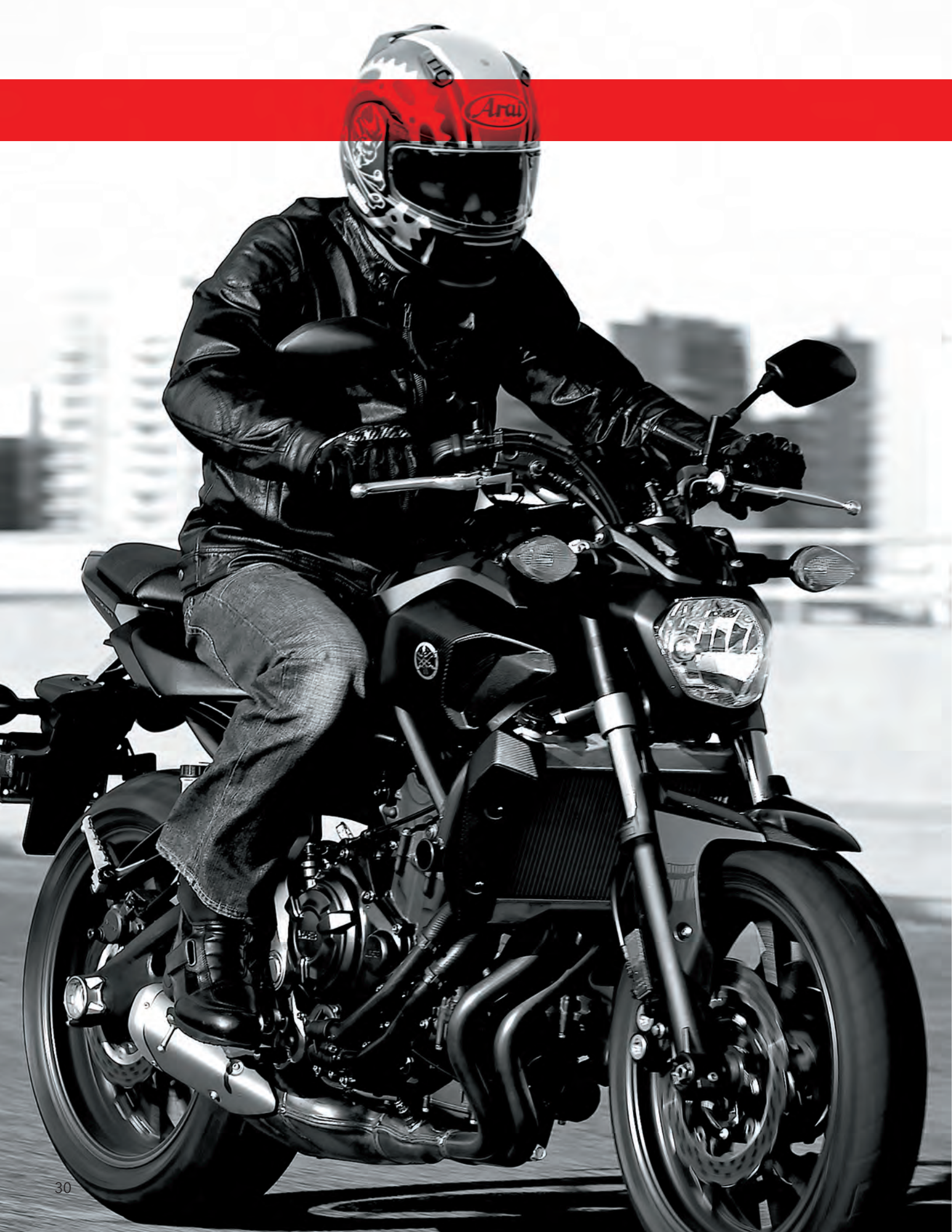
Bold Orange Frost



Bold Red Frost

\*Only use a clear Pinlock lens. Never use color or tinted lenses with the Pro Shade System.





## Defiant



**1. R75 SHAPE:** Arai's rounder, smoother, stronger shell. Get the whole story on pages 4 and 5. **2. NEW IR FRONT-SPOILER EDGE TRIM:** Creates a stabilizing downforce, reducing buffeting, lifting and wind noise that can be generated by the turbulence trapped between your shoulders and the bottom of the helmet. **3. NEW IR NECK ROLL PAD:** Has an improved shape to flow more air to the bottom of the helmet at lower speeds for enhanced rider comfort. **4. NEW IR CHIN VENT:** Offers much more than an aggressive new look. Its two-position operation provides multiple functions with tangible rider benefits. **5. FCS® CHEEK PADS:** The contoured shape - combined with multiple layers of varying foam densities supported by a patented foam "spring" - cradles the face like nothing that has ever come before, even from Arai. The spring makes on-off easier, while helping to block even more wind noise. **6. 5MM PEEL-AWAY CHEEK & SIDE-TEMPLE PADS:** Arai's exclusive 5mm peel-away surface pads on both sides of the headliner and in the FCS® Cheek Pads give you the option of 5mm more of interior width if needed (minimizing the need to purchase optional thickness pads). Yet another level of fit customization no other helmet brand offers. **7. REMOVABLE/WASHABLE LINER AND NECK ROLL:** Makes complete helmet cleaning a breeze and, in the case of damage, a snap to replace. **8. PRO SHADE SYSTEM COMPATIBLE:** This model accepts the optional Pro Shade System.







## Defiant



Asteroid Green



Asteroid Red



Chopper



Base Orange Frost



Base White Frost



Jolly Roger-2 Frost



Chronus Black



Chronus Green



Chronus Red



Chronus Yellow



Character Black



Character Red





## Vector-2



White



*Arai's basic helmet is anything but. We call it "Less is More," but like everything from Arai, our emphasis is on "More."*

**1. 5MM PEEL-AWAY SIDE/TEMPLE PAD LAYER:** The Vector-2 has a 5mm peel-away layer added to the removable interior comfort liner's side/temple pad, giving you another level of customization. **2. HYPER-RIDGE BAND:** This newly sculpted lower reinforcement band provides stability and a lower center of gravity for a very lightweight feeling. Specifically sized exhaust ports increase airflow while minimizing noise levels. And the larger bottom opening makes for easier on-off. **3. UNIQUE PATENTED CHIN VENT DESIGN:** The Vector-2's two-position detent adjustment allows incoming air to be directed to either the facial area for cooling or onto the shield to help clearing if needed. **4. 5MM PEEL-AWAY CHEEK PAD LAYER:** Giving you even more ability to craft the perfect fit and comfort for your face, the cheek pads now feature a 5mm peel-away layer for added room if needed. **5. TOP VENT:** The new ACF-2 front intake vent incorporates a sliding door that closes the oversized intake opening completely. At the same time the outer gate closes the intake opening, an inner plate slides over and closes the hole in the shell. The ACF-2 is now available as an accessory part. **6. TUNED REAR VENT/WING:** ACR-2 rear exhaust vent-wing combo: wind-tunnel tuned air inlets markedly improve ventilation performance and helmet stability at speed. **7. PRO SHADE SYSTEM COMPATIBLE:** This model accepts the optional Pro Shade System.



Diamond White

Aluminum Silver

Diamond Grey

Diamond Blue

Diamond Black

Black Frost

Pearl Black

Racing Red

Fluorescent Yellow





## Vector-2



Contest Red



Contest Silver



Hawk Green Frost



Hawk Blue



Hawk Red



Loop



Blossom Frost



Nakasuga



Crutchlow Frost



Schwantz 95 Frost



## CT-Z



Diamond White



*Arai takes cruiser/touring helmet comfort and design to a whole new place. A place you'll really want to visit – and never leave.*

**1. FCS® CHEEK PAD DESIGN:** Arai's patented new FCS® Cheek Pad design gives more support over a larger area. It actually wraps under the jaw for extraordinary comfort and stability with minimal pressure. **2. DUAL-PIVOT SHIELD:** The Dual-Pivot shield mechanism allows the shield to rotate up and back so it tucks neatly under the peak. This allows for a very low-peak profile, reducing drag or bucketing at higher street-legal speeds. **3. ADJUSTABLE PEAK:** The peak shields your eyes from the harsh sun glare during those long rides into the sun. And because Arai sweats even the tiniest details to make your ride better, there's also a matte-black band under the peak's leading edge to further reduce glare. **4. VENTED NECK ROLL:** Takes advantage of existing airflow from around the rider's neck to further enhance helmet ventilation by extracting more heat build-up from the interior. **5. UPPER VENT SYSTEM WITH AIRWING:** Diffuser ventilation technology from our Corsair-V race helmet gives you superb airflow and hot air extraction. The fixed AirWing reduces lift and increases aerodynamic stability at highway speeds. **6. FULLY REMOVABLE DRY COOL LINER:** Arai's Dry-Cool® Liner has removable 5mm peel-away surface pads on both sides of the headliner and in the FCS® Cheek Pads to allow you to achieve a close, custom micro-fit for your head and facial shape.



Aluminum Silver



Black Frost

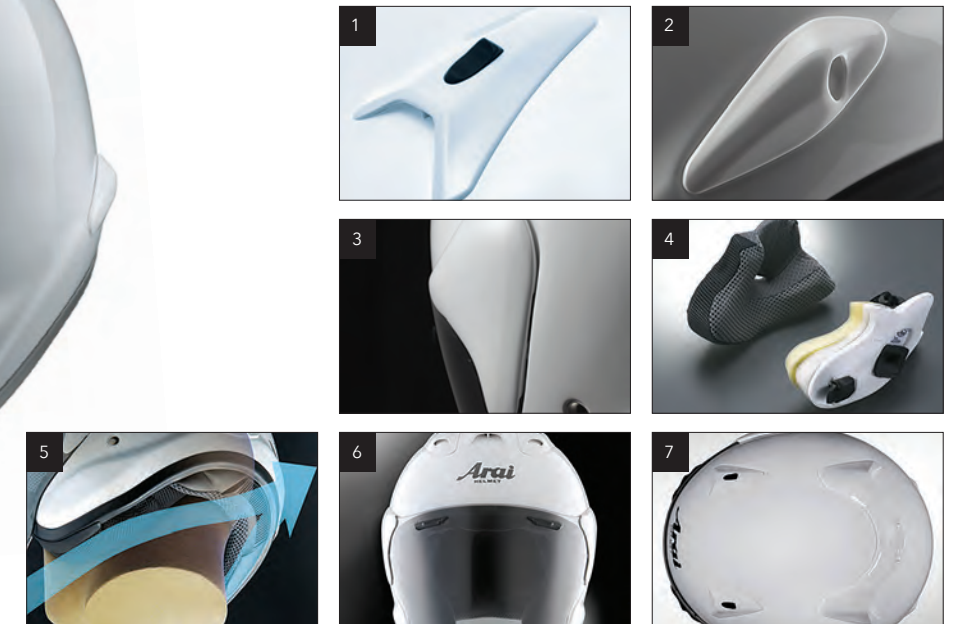


Diamond Black

## XC



Diamond White



*Gives you more facial coverage without sacrificing traditional open-face helmet feel.*

**1. TDF-3 FRONT VENT:** Working with the DDL-4 exhaust vents, the TDF-3 front vent is designed to further improve intake airflow to the XC's interior. **2. SIDE COWL EXHAUSTS:** Completing the XC's advanced ventilation package, these exhaust vents further help in quick removal of stale interior air. **3. LOW-PROFILE SHIELD ARMS:** The low-profile shield arms on the XC give the helmets a sleeker, more aerodynamic shape that integrates better with the XC's shell design for less air resistance. **4. UNIQUE CHEEK PAD DESIGN:** Adding to its distinctive look, the XC's cheek pad design is similar to that of a full-face helmet, with its full-coverage EPS base and removable covers. **5. VENTED NECK ROLL:** Arai's vented neck roll uses the prevailing airflow under the rider's neck to further enhance ventilation by extracting more interior heat and stale air. **6. ORGANIC SHELL SHAPE:** Follows the smooth, linear, naturally reinforcing shape of the egg – one of nature's strongest shapes. The shape "flows" better in the wind, conforming more to the head's natural shape – smaller and less bulbous – and seals better to further reduce wind noise. **7. DDL-4 VENTILATION:** Directly from Arai's RX-Q model – the Ultimate Street Helmet – the XC's DDL-4 exhaust vents are designed to maximize airflow at real-world street speeds.



Aluminum Silver



Black Frost

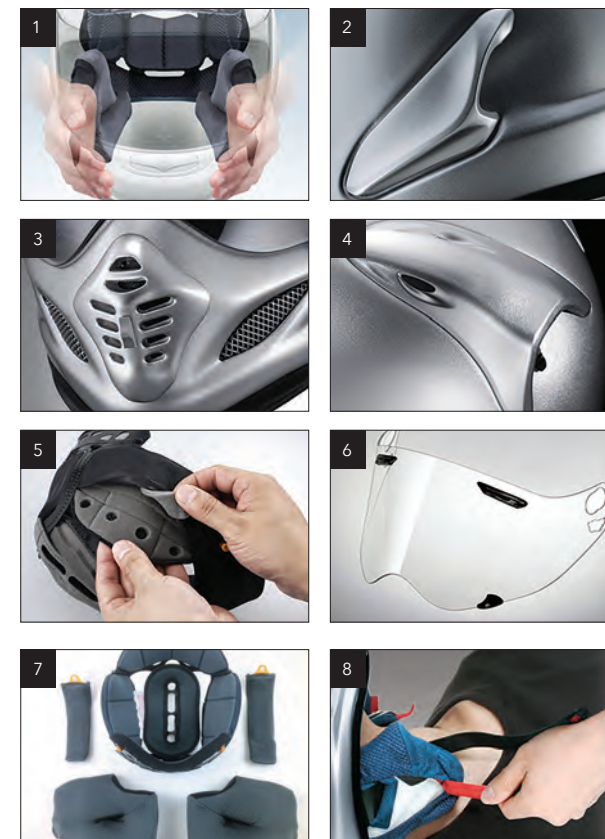


Diamond Black





XD<sup>4</sup>



**GO CONFIGURE** The XD4 offers three distinct configurations depending on rider preference or riding conditions. Change the look every time you ride – or even during the same ride.

**WARNING:** The visor/peak supplied with the XD4 helmet is not suitable for high-speed use. At such speeds, air catching a side or main surface of the peak may cause difficulty in returning the head to a forward and/or level position. To understand and prepare for this possible effect, you should first try to experience it at low speeds, gradually increasing speed so that you will know what to expect and determine when the peak should be removed for higher-speed riding.



#### XD4 MODEL FACESHIELD USAGE

**WARNING:** Although the XD4-model shield will fit earlier XD versions, **DO NOT INSTALL THIS SHIELD ON ANY EARLIER XD MODEL.** As there are no receiving ducts for this shield's Brow Vents in earlier XD helmets, debris, insects, etc., might enter through the vents and interfere with the wearer's vision and/or damage the eyes. Further, if the XD4 shield is tinted, light entering through the vent slots may distract the wearer.



*Arai did the only thing possible to this groundbreaking, critically acclaimed street-and-dirt crossover helmet. We made it even better.*

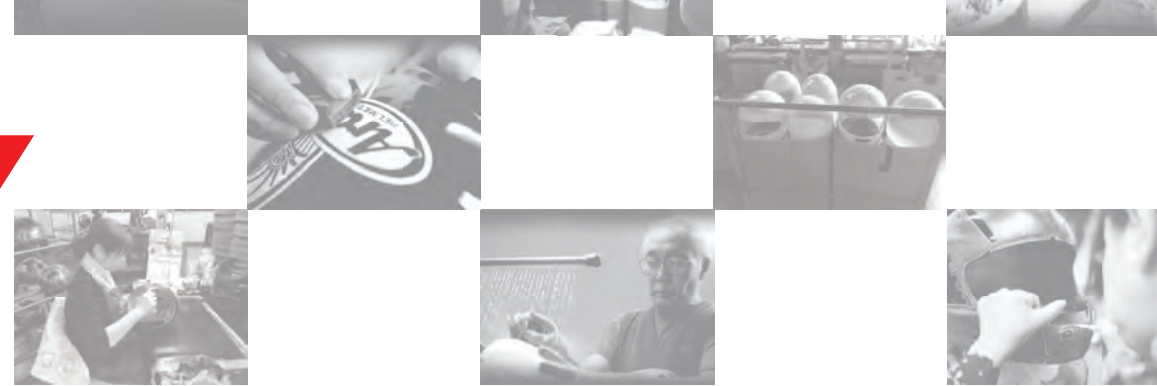
**1. FCS® CHEEK PADS:** Arai's patented FCS® Cheek Pad design delivers comfort and support, and it features our exclusive 5mm peel-away custom-fit layer. **2. LARGER SIDE COWL VENTS:** The larger, sculpted vents improve ventilation efficiency as well as helmet stability on your head at speed. **3. CHIN VENT:** The vent has more intake ports for improved airflow. **4. EXHAUST PORTS & SHELL SHAPE:** These top-diffuser-vent ports nearly double the XD4's airflow, while its shell shape provides better aerodynamic stability at higher street speeds in concert with its high-flow peak and side cowl vents. **5. 5MM PEEL-AWAY SIDE-TEMPLE PAD:** Arai's exclusive peel-away side/temple crown pads give you the option of 5mm more of interior width if needed. Yet another level of fit customization no other helmet brand offers. **6. BROW VENT FACESHIELD:** Brow vents in the XD4 faceshield provide airflow to the temple area of the head. **7. FULLY REMOVABLE/REPLACEABLE/WASHABLE INTERIOR:** Arai's Dry-Cool® technology keeps you drier and cooler (hence the name) for greater long-haul comfort. **8. EMERGENCY CHEEK PAD RELEASE SYSTEM:** Developed to allow easier access to an injured rider, the XD4's cheek pads slide out easily - via the integrated pull-tabs built into the underside of the cheek pad - making helmet removal much easier for trained medical personnel.







XD<sup>4</sup>



Diamante Black/White



Diamante Black/White/Gold



Diamante Red/White



Diamante Black/Blue



Flare Blue



Flare Sand Frost



Flare Red



Flare Orange





## VX-Pro<sup>4</sup>



*New design. New features. Same legendary protection.*

**1. A SMOOTH INSTEAD OF RIDGED SHELL:** The shell itself is consistently round and smooth, maintaining the R75 Shape concept in areas above the acknowledged test line and influencing those below the test line. Here, the rounded chin bar maintains the same compact shell length as the previous model, the VX-Pro3. The result is less protrusion, which has proven to be less likely to catch and dig in during a spill. **2. SHELL MATERIAL:** In order to maximize performance, we precisely assemble the shell from multiple proprietary components. Super Fiber, one of the primary materials, costs up to six times more than standard fiberglass but provides 30% higher tensile strength and increased penetration resistance. The cLc (complex Laminate construction) method demands precise and time-consuming assembly by master craftsmen from many individual pieces.

**3. CHIN BAR VENT GRILL:** Installed on the uniquely rounded chin bar, the stainless mesh grill is now mounted from the outside on the exterior vent cap and can be easily removed for cleaning or damage replacement. The vent cap is also designed to break away from the chin bar in the event of impact. **4. REAR DUCT:** The Air-Through top-rear-duct center brace also functions as a goggle-strap locator. The diffusers can be removed or replaced quickly and easily by removing a single screw on the rear-duct center brace.

**5. GOGGLE-STRAP LOCATOR:** The Goggle-Strap Locator keeps the goggle strap in position even during aggressive, competitive riding. The new top-rear-duct center brace, together with the side port cowlings, also assist in keeping the strap in position on the side and back areas. **6. NEW PEAK:** The new peak is 14mm longer and 5mm wider than the previous model for improved ability to deflect roost and flying debris. To compensate for increased lift, the air outlets on the new peak have been made larger as well. **7. EMERGENCY RELEASE SYSTEM:** The revised Emergency Release Cheek Pad system has the release tab repositioned and is easier to access by rescue staff. **8. REMOVABLE NECK ROLL:** The all-new removable neck roll allows easy and convenient cleaning of the helmet.



White

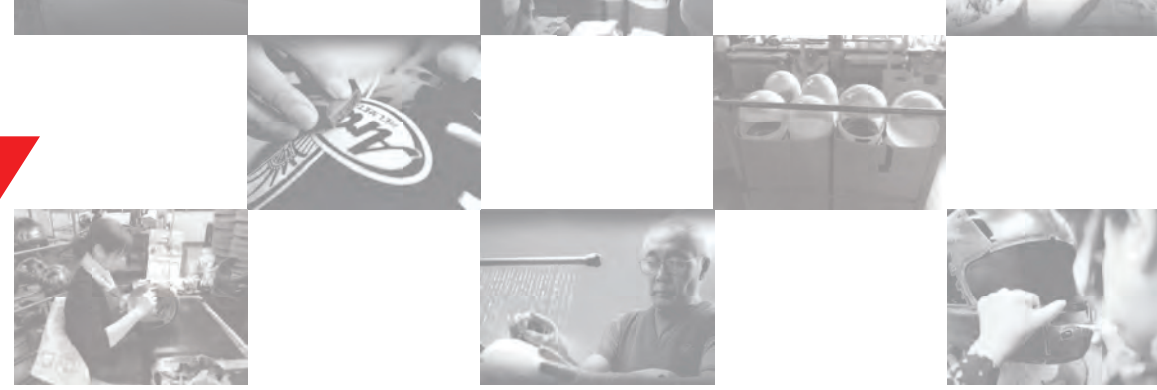


Black Frost





## VX-Pro<sup>4</sup>



Nutech



Tip Blue



Tip Green



Tip Orange



Tip Red



Tip Yellow Blue





## Warranty & Other Important Info

### ARAI'S 5-YEAR WARRANTY – THE BEST IN THE INDUSTRY.

All Arai helmets are warranted against defects in materials and workmanship and are serviceable only for the properly fitted first user for five years from date of first use, but no more than seven years from date of manufacture. It should be replaced within five years of first use. Throughout the years, Arai has recorded the manufacture date on helmets in a standard month/year format (00/00).

While the manufacture date has always been recorded on the chinstrap, as it is a permanent part of the helmet, the position on the chinstrap has changed over the years for various reasons. Therefore, the date-of-manufacture can be found in one of three positions on the chinstrap set:



Laser-engraved on the metal D-Ring buckle itself.



Printed on a white tag sewn to the side of the strap at the end of the cover.



Impressed into the black vinyl cover of the chinstrap on the D-Ring side.

### WARNING:

No helmet can protect the wearer against all foreseeable impacts. Nothing is a substitute for safe riding practices.

### EVEN A HELMET AS GOOD AS AN ARAI WON'T LAST FOREVER.

Like most major helmet manufacturers, Arai subscribes to the Snell Memorial Foundation benchmark of five years as the suggested usable lifespan of a motorcycle helmet. Why? Think of a helmet in terms of your body. No matter how good it may look, or how well you take care of it, age still takes its toll. Even with minimal use, a helmet is affected by things like the acids and oils in sweat, haircare products, pollution, exposure to UV rays, etc. At about the five-year mark, helmet interiors begin to show wear and/or deterioration, which should serve as an alert to its overall condition.

The helmet's fit may begin to feel a little "loose," not as snug as it once did. This unseen aging and deterioration of the EPS liner and fiberglass shell can affect the helmet's ability to perform as it was originally designed in an impact. If a helmet suffers an impact and any doubt exists as to its further ability to protect, it should either be returned to the manufacturer for competent inspection or discarded and replaced.

These are the reasons to replace your helmet after five years. Of course, if your helmet becomes less than snug in fit, or damaged, it should be replaced before the five-year mark.

### BUYING AN ARAI HELMET ONLINE.

Online shoppers take care to be sure they are dealing with an Authorized Arai e-commerce retailer. These dealers have agreed to follow guidelines to help customers make the best purchase possible – even long distance. Learn about these guidelines and verify Authorized Arai dealers by visiting: [araiamericas.com/e-dealer](http://araiamericas.com/e-dealer).

### IMPORTANT WARNING: BUYING FROM OTHER COUNTRIES.

Each world market requires different helmet standards. Never purchase helmets from outside your market as they may not comply with legally required standards for your country, not to mention the fact that their interior fit may not have been designed for your market and as a result may be very uncomfortable.

Helmets purchased from outside a given market are not eligible for after-sales service or warranty claims. Arai and its authorized agents cannot endorse the continued use of a noncertified helmet.



All Arai motorcycle helmets meet Snell standard in addition to mandated DOT standard. For further information on Snell standard, check [smf.org](http://smf.org).





## MAX VISION INSERT WITH BROW VENT - OFFERS COMPLETE FIELD-OF-VIEW COVERAGE.

For Arai SAI "Extreme Peripheral View" faceshields: Corsair-V, RX-Q, Signet-Q and Vector-2 models.



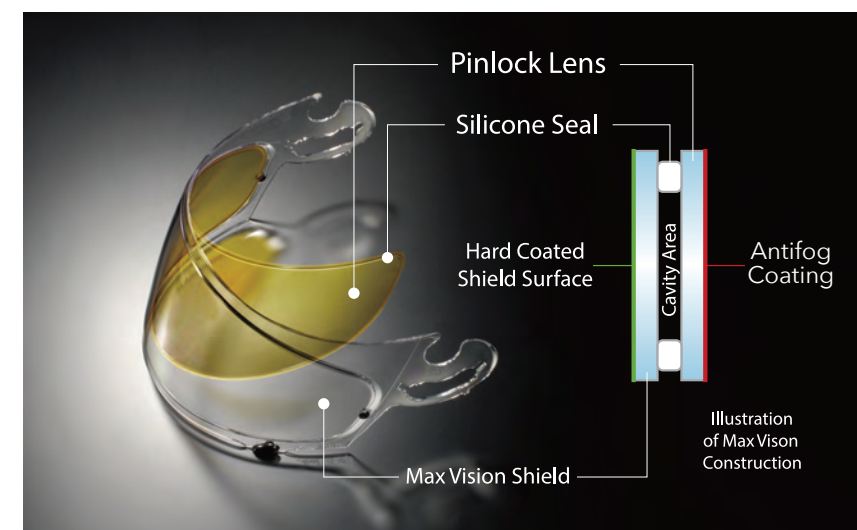
## STANDARD INSERT - OFFERS NORMAL FIELD-OF-VIEW COVERAGE.

For SAL faceshields: Profile, Vector and Quantum-2 models. For previous SAL faceshield equipped models.



## XD INSERT - OFFERS NORMAL FIELD-OF-VIEW COVERAGE.

For Arai XD Series models, including XD4 (insert will fit below the brow vents).



NOTE: A faceshield with pin, or a Max Vision shield, is necessary for the installation of the Pinlock insert.





Experience makes the difference.



*"What our people make here is an expression of themselves, not a product. That's why the main ingredient in every Arai helmet isn't fiberglass or carbon or EPS. It's passion. Passion for excellence. Passion for riders."*

*Michio Arai, President*

Specifications subject to change without notice. Helmet colors are as accurate as possible subject to the limitations of the printing process. Images: iomtt.com, BMW USA, Triumph Motorcycles North America, Yamaha USA, Ultimate MotorCycling magazine, Tom Riles, Kibiki and Kevin Wing. Apple and the Apple logo are trademarks of Apple Inc., registered in the U.S. and other countries. App Store is a service mark of Apple Inc. ©Arai Helmet, Inc. 2015. Printed 11/2014 in USA.

[AraiAmericas.com](http://AraiAmericas.com)



Search: Arai Helmets